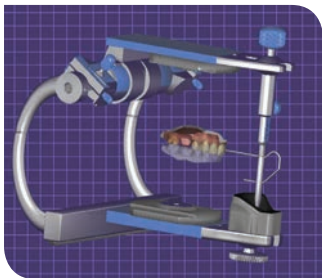




TECHNICIAN'S TIP



Did you know that all your fixed cases are mounted and designed on full-size adjustable articulators? That's right. Thanks to our CAD design programs, all cases are virtually

mounted on full-size adjustable articulators utilizing Bonwill's equilateral triangle and average value settings.

So even though your case may be returned to you on a small plastic articulator, you can be assured that the most up-to-date technology has been used at D&S to simulate mandibular jaw movements, move digitized occlusal surfaces against each other according to those movements, and then correct digitized occlusal surfaces to enable smooth and collision-free movements.